

# **LOWER SOUTHEAST BOWLS ASSOCIATION**



## **Lower Southeast Bowls Association Pennant Conditions of Play 2023-24**

**A copy of these Conditions of Play MUST be included in the Umpires Equipment at all LSEBA Pennant venues. Clubs to provide copies to Side Managers.**

Index	Rule	Page
Abuse of an Umpire	14.7	16
Advice of Results	5.9	10
Alternative Greens	3.8	7
Amalgamation	11.3	15
Appeals – Finals	10	15
Appeals – Minor Rounds	10	15
Artificial Devices - Wheelchairs, Walkers & Bowling Arms	13.1	15
ATTIRE/DRESS CODE	12	15
Bowls Compliance	14.14	17
Bowls Discs	13.2	16
Bowls Lifters	13.3	16
Cancellation at Venue Prior to Commencement of Play – Wet Weather	6.5	12
Changes To Player Position after Draw	3.12	8
Coach	14.9	17
COMPETITION FORMAT & SCHEDULE	3	6
Damage to Greens	14.13	17
Death	14.2	16
DEFINITIONS	1	4
Side; Team; Rink; Division; Section; Competitions;	1.1-1.6	4
Constituted Player; Starting Time	1.8	4
DISRUPTION TO PLAY – EXTREME WEATHER (HEAT)	7	12
DISRUPTION TO PLAY – INCLEMENT (WET) WEATHER	6	11
Draw Vacancy	3.6	7
Early Start games (Heat) - start time	7.4	13
Eligibility – Member Clubs	2.1	4
ELIGIBILITY, SIDE REGISTRATION & PLAYER ABSENCE	2	4
Ends to be played	3.2	6/13
EQUIPMENT	13	15
Extreme Weather (Heat) – Saturday Open Pennant	7.1	13
Extreme Weather (Heat) –Ladies Friday Pennant	7.4	13
Extreme Weather (Heat) – Wednesday Midweek Pennant	7.4	13
FINALS	9	14
Finals – Arrangements of Play	9.2	14
Finals – Player Eligibility	2.3	5
Finals – Venues	9.3	14
Finals Series	9.1	14
Fines & Penalties	14.1	16
Finishing Time	3.15	8
Footwear	14.15	17
Forfeits – Advice	5.4	10
Forfeits – Scoring	5.6	10
Greens Unavailability – Wet Weather	6.4	12
Hearings Appeal Committee Decisions	10	15
Home & Away Format	3.7	7
Late Arrival – Side	2.5	5
Late Results	5.10	10
Lightning	6.7	12
Management of Temperature Readings (Heat)	7.7	13

Mid-Game Break	3.14	7
Mobile Phones	14.3	16
Multiple Sides	3.5	7
National Competitions	14.4	16
OFFICIALS	4	9
Open Gender Pennant Competitions	2.7	6
Opposite Gender Players (OG)	2.8	6
Pennant Side Registration	2.10	6
Pennant Sides – Player Numbers	3.1	6
Player Absence	2.4	5
Player Code of Conduct	14.5	17
Player Eligibility	2.2	4
Player Eligibility – Minor Rounds @ Finals	2.3	5
Player Movement during Play	3.13	8
Player Permits	2.2.3	4
Player Permits	2.11	6
Player Permits	Appendix A & B	26/27
Player Withdrawal (Heat)	7.9	14
POLICIES	14	16
Practice	3.10	7
Pregnancy Policy	14.11	16
PROMOTIONS & DEMOTIONS	11	15
Promotions & Demotions - Saturday Open	11.1	15
Promotions & Demotions – Friday Ladies	11.2	15
Protests – Finals	10	15
Protests – Minor Rounds	10	15
PROTESTS / APPEALS	10	15
Recording and Confirming Results	4.3	9
REPLAYS	8	14
Replays – Finals	8	14
Scoreboards	5.2	9
Scoreboards, Flags etc. during play	13.4	16
Scorecards	5.1	19
Scoring – Incomplete Games	5.7	10
SCORING & RESULTS	5	9
Scoring of Byes	5.8	10
Scoring of Game Results	5.3	9/10
Side Divisions	3.3	6/7
Side Limits	3.4	7
Side Manager Responsibilities	4.2	8
Smoking	14.12	17
Spectators	14.10	17
Start Times	3.9	7
Stoppages of Play (Heat)	7.8	13
Substitutes	2.4	5
Suspension of Play – Wet Weather	6	11
Throwing the Mat	14.8	16
Trial Ends (Roll Up)	3.11	7
Umpire of the Day	4.1	8
Unacceptable Behavior	14.6	16
Unregistered Players	2.9	6
Extreme Weather (Heat) Policy	Annexure A	17
Weather Station Allocation	Annexure B	18
Flow Charts		20 – 22
Pennant Conditions of Play		28
PENNANT FINALS ROSTERS		23 - 25

**The Lower South East Bowls Association (LSEBA) is the Controlling Body for the Wednesday Midweek, Friday Ladies, and Saturday Open Pennant competitions.**

**All Pennant games will be played in line with 'The Laws of the Sport of Bowls – Crystal Mark 3rd Edition Version 3.1 plus updates (Laws) and 'Domestic Regulations April 2019' (DR's) and these Conditions of Play (Rules). The LSEBA may alter the Conditions of Play at any time at its discretion.**

## **1. DEFINITIONS**

### **1.1 Side**

A number of teams whose combined scores decide the result of a Pennant game (refer Rule 3.1).

### **1.2 Team**

Pair: a team of two players whose positions, in order of play, are 'Lead' and 'Skip'.

Triple: a team of three players whose positions, in order of play, are 'Lead', 'Second' and 'Skip'.

Four: a team of four players whose positions, in order of play, are 'Lead', 'Second', 'Third', and 'Skip'.

### **1.3 Rink**

The section of the green on which a game is to be played.

### **1.4 Division**

A level of competition e.g. Division 1,2,3,4 etc.

### **1.5 Section**

A sub-division of a level of competition and made up of 6, 8, 10, or 12 sides as required.

### **1.6 Competitions**

**1.6.1** These Conditions of Play are applicable to three competitions:

Saturday      Open Gender

Wednesday    Open Gender

Friday          Women

**1.6.2** Open gender competition – open to all eligible players as per Rule 2.2.

**1.6.3** Single gender competition – a gender specific competition restricted to players identifying with that gender, except for the inclusion of Opposite Gender players as per Rule 2.8.

### **1.7 Domestic Regulation (DR)**

Regulations created by Bowls Australia that vary from the Laws of the Sport of Bowls for Domestic play.

### **1.8 Constituted Player**

A member of a team who has commenced their game (i.e. when the jack has been delivered in the first end) or as per the provisions of DR 2.3

## **2. ELIGIBILITY, SIDE REGISTRATION & PLAYER ABSENCE**

### **2.1 Member Clubs**

A Member Club may compete if it conforms to the requirements of the Bowls SA and LSEBA Constitutions and By-Laws, and the Laws of the Sport of Bowls.

### **2.2 Eligibility to Play Pennants**

**2.2.1** A Member may only play LSEBA pennants or other LSEBA events for the Member Club with which the Member holds current Full or Junior/Student registration with Bowls SA (the Member's "nominated Member Club"), except where allowed by the Laws of the Sport of Bowls, by the Issue of a Pennant Permit by the LSEBA or Bowls SA or by these Rules & Conditions of Play.

**2.2.2** A Member must also be a registered Member of the LSEBA.

**2.2.3** A fully registered member of Bowls SA and the LSEBA may play in a mid-week (Monday – Friday inclusive) pennant competition or Saturday Pennant competition for a Member Club other than the club they are registered with in SA provided:

- the members nominated Member Club does not participate in a comparable mid-week (Monday – Friday inclusive) or Saturday pennant competition; and
- both Member Clubs involved consent & the member has obtained a Pennant Permit from the LSEBA and Bowls SA. A LSEBA Pennant Permit form ([Appendix A or B](#)) is required to be completed and approved annually. A permit fee of \$20 must be paid to the LSEBA.

The abbreviation of the club name of the Permit player's club that they are registered with in SA must be recorded on the scorecards alongside the player's name.

## **2.3 Player Eligibility – Minor Rounds and Finals**

- 2.3.1** A player must play 3 games of Pennant in the Minor Rounds in that competition in any division in the current season to qualify for Pennant Finals.
- 2.3.2** A player is eligible to play Pennant Finals in a Division or Colour within a Division, if 3 or more of the last 5 games they have played were in that Division or Colour. They cannot play finals in a Lower Division or Colour without permission from the LSEBA Board, but can play finals in any higher color or division.
- 2.3.3** A player who has qualified for finals, as per rule 2.3.1 but has not played 3 or more games in the same Division or Colour in the last 5 games they have played, is only eligible to play finals at the highest level they competed at in those 5 games unless they get permission from the LSEBA Board to compete at a different level.
- 2.3.4** Maximum Penalty – side loses all points and all shots scored for each infringement.
- 2.3.5** Clubs with more than one side in a Division must rank the colors in order when nominating their sides with red becoming the top side then blue.
- 2.3.6** If a side has a bye, a player who has played more than one of the last four games in that side is not eligible to play in a lower color in that Division, or play in a lower division on the day of the bye, without the approval of the LSEBA Board.
- 2.3.7** The LSEBA Board may vary these conditions on application of a club claiming exceptional circumstances.

## **2.4 Substitutes (DR 2.1.3 & 2.4)**

- 2.4.1** A substitute will be allowed as a temporary alternative to a selected player who is unavailable to play at any time (including the first end) during a Pennant game for a reason acceptable to both skips, or if they cannot agree the Umpire or Controlling Body shall decide that the substitute is necessary.  
A substitute is only allowed if a player is not able to continue because of illness or other reasonable cause.  
Only one substitute will be allowed in a team at any one time.  
Substitutes must play in the same position as the player being substituted unless that player is the skip. If a substitute is required for a skip, then an original player must become the skip and the other players rearrange their positions. A player who has been substituted for may re-join the team in their original position and the other team members must revert to their original positions. DR 2.4 shall apply.
- 2.4.2** (SUB) Substitute must be recorded on the scorecards next to the temporary player's name.

## **2.5 INCOMPLETE SIDES/TEAMS**

- 2.5.1** Up until the commencement of a game a Replacement Player can be brought into the team /side for the absent player.
- 2.5.2** A substitute is only allowed if a player is not able to continue because of illness or other reasonable cause.
- 2.5.3** A substitute can only be introduced if both the skips agree, or if the opponents cannot agree, the umpire or controlling body shall decide that the substitute is necessary Law 33.3
- 2.5.4** Substitutes names and the word sub must be noted next to the original players name on all scorecards and result sheets.
- 2.5.5** In a side game a team may play with 3 players without a second, the other second plays two bowls straight then play continues. DR 2.5 Laws of the Sport of Bowls.
- 2.5.6** If a club with a Saturday Open Division three side (with exceptional circumstances, Rule 2.8.2/d ) cannot fill a full side, each team can play with 3 players with 8 bowls (leader plays 2, third 1, leader 1, third 2 and skip 2 bowls)
- 2.5.7** If one team (rink) has a car breakdown and fails to arrive, then the side must be rearranged into three sides of 3 or more using substitutes from the host club or else must forfeit. Refer DR 2.4 & 2.6 Laws of the Sport of Bowls. Open Saturday Division 1, 2 sides with three (3) players use six (6) bowls and Division 3 sides use 8 bowls. Friday Ladies Division 1 & 2 sides with three (3) players use six (6) bowls

## **2.6 Restricted Player**

- 2.6.1** If a Member Club has insufficient Full or Junior/Student registered bowlers from that Member Club available to field a side, that Member Club may play any Bowls SA Member Club registered restricted player, e.g. casual or Night Owl bowler.
- 2.6.2** A restricted player shall be limited to participate in a maximum of three pennant games in any one season. They may participate in more than three games in the same season by becoming a Full or Junior/Student registered member of the Member Club.

## 2.7 Saturday Open Gender Pennant Competitions

In Open Pennant Competitions, each Member Club shall have a selection policy based solely on merit and any player who is eligible for selection shall be entitled to be considered to play in any position in the team based on merit.

## 2.8 Opposite Gender Players (OG)

In single gender competitions, e.g. Ladies Friday Pennants, the following rules for the use of Opposite Gender Players will apply.

The spirit of these rules is to enable a match to take place when a substitute is necessary and prevent forfeits. The spirit of sportsmanship should always apply.

**2.8.1** No Opposite Gender Player shall be selected for a game if the Member Club has sufficient available registered same gender players.

**2.8.2** If a member club has insufficient same gender players available at any time, then any member of that club may be used in the member clubs lowest Division/Color, provided that the player has been judged eligible as follows:

- a) **Each club is to nominate up to five opposite gender players to the LSEBA Board for approval to be eligible to play Ladies pennants in Divisions lower than Division one.**
- b) OG players must not be used in any side in Division One.
- c) In exceptional circumstances a club may seek a player permit from M and P committee (rule b) supply evidence to support their application.
- d) If in exceptional circumstances the M and P Committee cannot be contacted that morning before start of play clause 2.5.7 may be used to play.

**2.8.3** If a Member Club has insufficient same gender players available at any time, then Opposite Gender members may be selected in the following manner:

- a) Each club shall be permitted to select Opposite Gender members at a level commensurate with the playing ability of the player they are replacing, as judged by the club selectors.
- b) A maximum of one less than half the side can be Opposite Gender players, with a maximum of two in any one rink.  
Opposite Gender members can only be selected as lead or second.
- c) Opposite Gender members must play three games in the minor round to qualify for finals.
- d) Blatant disregard of these rules can be referred to the LSEBA Board and they will have the power to investigate the circumstances of any such case and apply penalties is considered necessary.
- e) If an Opposite Gender member is selected as a substitute, they must be identified on the team sheet, and the score card, with an (OG) alongside their name.

**2.8.4 Heat Rule:** Any Opposite Gender player allowing themselves to be selected shall be deemed to have accepted the heat rule for that competition.

## 2.9 Unregistered Players

**2.9.1** Except in cases otherwise referred to in these LSEBA Conditions of Play, all players must hold Full or Junior/Student registration of Bowls SA through their Member Club to be eligible to compete in LSEBA Pennant competitions. Any Member Club playing an ineligible player in any LSEBA Pennant competition will be penalized in accordance with the Laws of the Sport of Bowls and the Bowls SA & LSEBA Constitutions and By-Laws. The penalty will be a side forfeit. In the event of a side forfeit penalty being imposed, the side receiving the forfeit will not be penalized shots up if they have scored greater than those allocated for a forfeit.

**2.9.2** An audit may be conducted by Match & Program Committee at a scheduled time during the season and spot audits may occur at any time throughout the season.

## 2.10 Pennant Side Registration

Member Clubs are required to apply to the LSEBA for inclusion of sides to, or withdrawal of sides from the following season's Pennant Program no later than the Delegates Meeting, in accordance with the LSEBA constitution clause 18.1.2.

Match & Program will allocate sides to Divisions, taking into account promotions and relegations, for ratification at the AGM in May.

Any Club withdrawing a side after the season opening day could be fined at the discretion of the Board.

## 2.11 Player Permits

When a Member Club does not enter a side in a particular Pennant competition e.g. Mid Week, their members may seek a permit to play in that competition with another Member Club (as per Rule 2.2). Any player who receives a permit shall be eligible for selection in any side and in any position for the Member Club that they are issued a permit for. Players playing under a permit must wear the uniform of the member club that they are playing for.

# 3. COMPETITION FORMAT & SCHEDULE

## 3.1 Pennant Sides – Player Numbers

Each Pennant side shall consist of the following number of players:

**Saturday Open**

All Divisions: Three teams of four players

**Mid- Week**

All Divisions: Two teams of four players.

**Friday Ladies**

All Divisions: Two teams of four players

**3.2 Ends to be played**

**Saturday Open Pennants, Mid Week, Friday Ladies.**

All Divisions 25 ends

**3.3 Side Divisions Saturday**

Division 1 and 2: One section each of 10 sides.

Division 3: Two sections: North with 10 sides, South with 9 sides.

**Wednesday**

Division 1: One section of 11 sides.

**Friday**

Division 1: One section of 10 sides

Division 2: One section of 10 sides

The number of sections and sides can be altered as determined by Match and Program.

**3.4 Side Limits**

Member Clubs will be limited to the following number of sides in each Division:

**Saturday Open Pennants**

All Divisions: Two sides in each division or as determined by Match & Program Committee.

**Wednesday Midweek**

All Divisions: Two sides in each division or as determined by Match & Program Committee.

**Fridays Ladies**

All Divisions: Two sides in each division or as determined by Match & Program Committee.

**3.5 Multiple Sides**

Where a Member Club has more than one side in the same Division the sides will be designated Red and Blue; Red being the higher ranked side and Blue the next ranked side etc.

**3.6 Draw Vacancy**

When a vacancy occurs in the draw, the opposing sides will be granted a Bye, and awarded points and shots as applicable under rule 5.8.

In the event of the withdrawal or addition of a side by a Member Club, Match & Program Committee will consider a redraw of the section, if necessary, to avoid Byes.

**3.7 Home & Away Format**

All games shall be played in a 'Home and Away' format as in the 'Order of Draw'.

Fixtures will be distributed to Member Clubs and posted on-line once confirmed. Any changes will also be distributed in the same way.

**3.8 Alternative Greens**

If a Member Club, whose greens have been declared unsuitable or are unavailable for play, can use the rinks of another Member Club, the first mentioned club shall negotiate the payment of green fees with the host club. It is the responsibility of the scheduled 'Home' club to advise the opponents of the change of venue.

**3.9 Start Times**

Saturday: Trial ends 1.00pm – Play not later than 1.15pm

Wednesday: Trial ends 10.00am – Play not later than 10.15am

Friday: Trial ends 10.00am – Play not later than 10.15am.

Early start: Trial ends 9.00am – Play not later than 9.15am

At the scheduled starting time for games the Umpire of the Day will ensure that no further trial ends are played.

The starting and finishing times, day and date, and venue of any scheduled game may be varied, with the consent of the Member Clubs involved and the approval of Match & Program Committee. Refer Rule 3.15 for restrictions.

**3.10 Practice****3.10.1 Greens are to be made available to those wishing to practice by**

Saturday: 12.15pm to 12.45pm

Wednesday: 9.15am to 9.45am

Friday: 9.15am to 9.45am

**3.10.2** On days of extreme weather (Heat) Policy altered start times, greens may not be available for practice.

**3.10.3** In extraordinary circumstances relating to inclement weather or mechanical breakdown, the Greens Manager or their proxy may decide to close their green/s for practice to enable the completion of preparation of the playing

surface.

- 3.10.4** Players can practice on the green of play, or any other green, but not on the rinks allocated for that Division. Side Managers must ensure that the rinks of play are allocated before:
- 12.15pm Saturday,
  - 9.15am Wednesday,
  - 9.15am Friday,
  - 8.15am on early start Heat Policy games.

**3.11 Trial Ends (Roll up)**

Two trial ends are permitted on the rink drawn with the number of bowls to be used in the game; to commence and be completed in accordance with Rule 3.9.

**3.12 Player Position**

No changes to player positions shall be permitted before the commencement of play once the draw for rinks has been made, except for physical disablement, where permission must be sought from the opposing side Manager and Umpire of the Day.

**3.13 Player Movement during Play**

Players will only be allowed to walk up to the head under the following circumstances:

**Fours:** Leads and Seconds: after the third player in their team has played their second bowl

Thirds: after the delivery of their second bowl

Skips: after delivery of each of their bowls.

In exceptional and limited circumstances, a Skip can ask that a player walks up to the head earlier than described above.

**3.14 Mid-Game Break**

**Saturday**

All Divisions – There shall be a 10 minute break After **completion of 15 ends per rink.**

**Wednesday**

All Divisions - A Lunch break shall be taken after 15 Ends.

**Friday**

All Divisions - A lunch break will be taken after 15 Ends.

**Any variation to the conditions of a specified break is subject to the agreement of both side Managers and Umpire of the Day. This can include the removal of the break.**

**3.15 Finishing Time**

In any competition, the result of the game will stand provided that sufficient ends have been completed to obtain a result in accordance with Rule 5.7. If, at the time limit, the Jack has been rolled, the end shall be completed but not replayed if it becomes dead.

**Saturday:**

Games commencing at 1.00pm will cease with the completion of the end in play at 6.00pm.

**Wednesday:**

Games commencing at 10.00am will cease with the completion of the end in play at 3.00pm.

**Friday:**

Games commencing at 10.00am will cease with the completion of the end in play at 3.00pm.

**Early Start Heat Policy Games:**

Games commencing at 9.00am will cease with the completion of the end in play at 2:00pm.

**Games played at other times:**

Where a game has been re-scheduled with approval of the Match and Program to a different start time, the game will cease with the completion of the end in play 5 hours after the start time.

**All Night Games must cease with the completion of the end in play at 11:00 pm, regardless of the start time.** If the Jack has been rolled, the end shall be completed but not replayed if it becomes dead.

**4. OFFICIALS**

**4.1 Umpire of the Day**

- 4.1.1** The Host Club is responsible for supplying an Umpire of the Day, with the name of the Umpire to be shown on the host club's notice board. In the event that no qualified Umpire is able to be present at the Club on game day, the visiting side is to be approached and asked to supply an Umpire of the Day. In the event that both clubs are unable to provide a qualified Umpire of the Day, the Host Club is to appoint an experienced and suitable member to fill the role of Umpire of the Day.



- 4.1.2** The Umpire of the Day will supervise the drawing of the teams & rinks at the allocated time and will ensure that practice ceases at the times scheduled in rule 3.10.

## **4.2 Side Manager Responsibilities**

### **Prior to the game**

- 4.2.1** Players names must be entered into the online results portal by the following times:  
Saturday Pennant competition – Friday 6.00pm.  
Wednesday Midweek competition – Tuesday 6.00pm.  
Fridays Ladies Pennant competition – Thursday 6.00pm.

### **On game day**

- 4.2.2** Managers must be present at the venue fifteen (15) minutes prior to the scheduled starting time for trial ends. Teams & rinks will be drawn at that time.
- 4.2.3** If only one side Manager is at the venue 5 minutes before the starting time for trial ends that side Manager and the opposition proxy side manager will allocate the rinks so that players can begin their trial ends at the scheduled time.
- 4.2.4** Both side Managers are to ensure that their scorecards are correctly completed with Date, Division, Section, Club Name, all Player's Names printed clearly, as registered on BowlsLink, and if applicable, Substitute (SUB), Opposite Gender (OG) or Permit (Player's Member Club Abbreviation) before commencing the draw.

### **The Draw**

Home side Manager – Obtain rink allocation.

**4.2.5** Where both sides have an equal number of teams of only three players, those teams shall be drawn together. Any additional three-member teams shall be drawn with the remaining four member teams. The draw for opponents and rinks shall be drawn separately for each of these groups. The teams shall then play as drawn.

- Home side Manager – shuffle and place the visitors scorecards face down on table
- Visiting side Manager – shuffle and place the home side scorecards face down on top of visiting side scorecards.
- Allocate rinks to each pair of scorecards before they are moved
- Both side Managers legibly complete scorecards as indicated in Rule 4.2.4, ensuring that notations are correctly recorded on the scorecards and initialed by the Umpire of the Day if necessary.
- Toss for mat – the result of toss to be recorded on each scorecard.

## **4.3 Recording and confirming results**

- 4.3.1** After the game has been completed, side Managers are to ensure that all scorecards have been completed correctly, all cards are signed in accordance with the Laws of the Sport of Bowls and that the Completion Time has been recorded on all scorecards.
- 4.3.2** The Home side club must ensure that their player names & positions are adjusted correctly, rinks are matched, and rink scores are entered into the online results portal before the prescribed time limits for results entry (refer Rule 5.9.)
- 4.3.3** The Away side club must ensure that their player names & positions have been adjusted correctly and that the rink scores have been entered correctly. They should then confirm the result unless there is a dispute over the scores.
- 4.3.4** If there is a query concerning the accuracy of the results entered on-line, the Away side Club should contact the Home side Club ASAP, but at least by the end of the next business day following the game. If this fails to resolve the issue the Pennant Recorder must be contacted by email by the end of the second business day following the game giving details of any discrepancy and including a copy of the scorecards relevant to the issue.
- 4.3.5** If a protest is pending by either side, scores should be entered as normal. For protest procedures refer to Rule 10.
- 4.3.6** If a game has been abandoned but has reached the minimum number of completed ends (refer Rule 5.7), scores are to be recorded & confirmed as per Rules 4.3.2 & 4.3.3.  
If a game has been abandoned but has not completed enough ends to constitute a completed game, the game shall be treated as a draw (refer Rule 5.7), with game points shared equally and two shots to each team.
- 4.3.7** In the event of a side forfeit (refer Rule 5.5), scores are to be recorded & confirmed as per Rules 4.3.2 & 4.3.3.
- 4.3.8** In the event of a Bye (refer Rule 5.8), scores are to be recorded & confirmed as per Rules 4.3.2 & 4.3.3.

## 5 SCORING AND RESULTS

### 5.1 Scorecards

5.1.1 Scorecards for each game shall be the responsibility of the Second from each team.

5.1.2 At the end of the game, the Seconds who are responsible for maintaining the scorecards must record the time of completion and sign both cards as correct.

5.1.3 Scorecards should be retained until the pennant season has been completed for audit and dispute purposes.

### 5.2 Scoreboards

The scoreboard may be updated at any time by any person but must be updated at least every second end and the Second is responsible for ensuring it is correct as per the scorecard. Refer DR. 3.1

### 5.3 Scoring of game results

5.3.1 The results of each game shall be scored as follows:

#### Three Team Sides

Game points	Win 6	Draw 3	Loss 0
Team points	Win 2	Draw 1	Loss 0

#### Two Team Sides

Game Points	Win 4	Draw 2	Loss 0
Team Points	Win 2	Draw 1	Loss 0

5.3.2 The leading Side in each Division will be determined according to the total points scored and in the event of two or more sides having equal points, then shots up shall decide. If points and shots up are equal, then the side with the least shots scored against it shall rank higher.

### 5.4 Forfeits

5.4.1 The side receiving the forfeit will be credited with maximum points and 4 shots up per team.

5.4.2 The side forfeiting will record a loss and receive no points or shots.

5.4.3 The side forfeiting will be fined \$24 (green fee per team)

i.e. \$48 for a 2 team side and \$72 for a 3 team side.

5.4.4 The fine shall be paid to the Treasurer of the LSEBA within 7 days of the club receiving written advice from the Treasurer that a fine has been imposed.

a) if the offending team is the away team LSEBA shall pay the fine to the home team.

b) if the offending team is the home team the LSEBA shall retain the fine.

5.4.5 If a club has insufficient players to fill sides then the lowest rank side shall be the side that forfeits. However, all sides can play with 9 players in order to prevent the lowest side forfeiting refer Rule 2.5.5 and 2.5.6.

5.4.6 The forfeit penalty for a clubs lowest pennant side will be given special consideration by the Board to waive/uphold

5.4.7 A Member Club considering forfeiting a pennant side from a Round due to insufficient players MUST first contact the opposing Club to ascertain whether they are able to supply additional players in accordance with the Laws of the Sport of Bowls and these Conditions of Play to enable the game to continue.

5.4.8 A Member Club finding it necessary to forfeit a side must endeavor to advise the opposing club ASAP.

5.4.9 Any fines imposed by LSEBA Board not paid within 14 days of receiving the invoice will incur the loss of all premiership points for all Pennant divisions in that club for that season until the fines are paid.

### 5.5 Forfeits – Entering Results

In the event of a Side forfeit the Member Clubs involved are required to complete the results procedures on the on-line results portal as indicated in Rule 4.3. The Side Manager of the Side receiving the forfeit should ensure that the players' names are entered as per Rule 4.2.1.

### 5.6 Forfeits – Scoring

When a side receives a forfeit, scoring will be as follows:

Three Team (12-a-side) competitions – 12 points and 12 shots.

Two Team (8-a-side) competitions – 8 points and 8 shots.

### 5.7 Scoring of Incomplete Games

5.7.1 If Match & Program Committee has not determined that all play shall be cancelled owing to inclement weather, and a game is started and then abandoned, it shall be deemed to have been completed with the scores at the time of cancellation if:

**Saturday Open Pennant Competition (3 team sides): 15 ends have been completed in each rink.**

**Wednesday Midweek and Friday Ladies (2 team sides): 15 ends have been completed in each rink.**

5.7.2 If the required minimum number of ends, as shown above, are not completed, the game shall be treated as a draw (refer Rule 5.8) with game points shared equally and two shots awarded to each team.

### 5.8 Scoring of Byes

When a side receives a Bye, scoring will be as follows:

Three Team (12-a-side) competitions – 9 points and 9 shots

## 5.9 Advice of Results

Results must be entered by the home side, on the on-line results portal by Saturday Open Pennant: 7.00pm on the day of play.

Friday Ladies Pennant: 4.00pm on the day of play.

Mid- Week Pennant: 4.00pm on the day of play.

The away side should try to confirm the results by the same time, but at the latest by 9.00am the following day.

## 5.10 Late Results

**5.10.1** Failure by a Member Club to submit pennant results within the time frame, as set down in Rule 5.9, without an acceptable explanation to the LSEBA, may incur a fine from the LSEBA.

**5.10.2** Second and subsequent failures to submit pennant results within the time frame, as set down in Rule 5.9, without an acceptable explanation to the LSEBA, shall incur a fine from the LSEBA.

## 6 DISRUPTION TO PLAY – INCLEMENT (WET) WEATHER

The LSEBA has adopted the Bowls SA Inclement Weather Policy which is printed below. All members should read this document so that they are responsible for their own duty of care.

All umpires and controlling bodies and any other person in control of an event must make sure that they are familiar with this policy and must ensure it is complied with.

**Anyone who breaches this policy will not be covered by the Bowls SA Insurance policies. Put simply this could risk all the assets of the bowling club involved and the assets of the officials who ignore the policy.**

### 6.1 RAIN, HAIL, WIND etc

**6.1.1** Before commencing Pennants or a scheduled event, the Side Manager, Event Manager, Umpire of the Day and Greens Manager will be responsible to assess the expected weather conditions for the duration of the event.

**6.1.2** When inclement weather is forecast LSEBA or the Controlling Body for that event is required to monitor Bureau of Meteorology Weather Reports for local weather conditions and initiate procedures to reschedule, cancel or modify play in accordance with the Conditions of Play for the event.

**6.1.3** When play has commenced or is about to commence and the weather conditions deteriorate, play may be stopped on appeal of a Side Manager to the Umpire of the Day on the grounds that the weather conditions are such that continuing to play would constitute a breach of duty of care. A Side Manager's appeal shall only affect the game in which their side is engaged and shall not affect any other games at the same venue.

**6.1.4** If play has been stopped or could not be commenced at normal starting time, it shall not be resumed without permission of the Umpire of the Day. Play will be cancelled for the day if it is not possible to resume after one hour from the time of the last stoppage or from the commencement time. Play may not be cancelled until the expiry of the hour from the last stoppage unless there is insufficient time to get a result as per rule 6.1.5. **Common sense can allow the one hour limit to be extended if the weather forecast or radar image, indicate that conditions will improve quickly and there is adequate time available.**

**6.1.5** When a game is stopped owing to inclement weather, or for any other valid reason, it shall be deemed completed if **15 ends are completed in each rink**. The leading side shall claim a win. (For Heat the end in progress is finished refer rule 7; Monitoring Heat)

- When play is stopped for rain, hail, wind, or lightning they shall cease immediately without finishing any ends in progress.
- **An end commenced but not completed, shall be declared dead.** Law 32.2
- If all required bowls in the end have been played but the result of the end has not been decided, **the result should be decided before the game stops.** Law 32.3
- The players can agree to stop play only when the Umpire or a Representative of the Controlling Body is not present. Law 32.1.3

### 6.2 Uncompleted Rounds

In rounds where heat or inclement weather results in some games not being completed, there will not be any replayed games. The game shall be treated as a draw with game points shared equally and two shots awarded to each team (refer Rule 5.8).

### 6.3 Open Pennant

The Chairman of the Match & Program Committee shall be the authority for determining, prior to 10am on Saturday, whether Pennant Play shall be postponed for the day due to inclement weather.

**If it has not been announced that all play be postponed for the day**, the Umpire or the Greens Manager of the Host Club or his Deputy, shall be the authority for determining whether play may, or may not commence as per Pennant Rule 6.1.3 to 6.1.5.

The event shall be cancelled if in the opinion of the Umpire a result cannot be reached in the remaining time available. The Umpire shall consult with both Team Managers and shall use an allowance of ten (10) minutes per end, and for pennant a completion of 15 ends per team.

For each LSEBA Pennant competition conducted by the LSEBA, an attempt will be made to commence and complete all games, applying the Rules below if appropriate.

In the event of the likelihood of extreme weather, Match & Program Committee reserves the right to cancel all games in a Pennant round.

Pennant games will be played at all venues that are open, even if the majority of other venues have been closed.

In the event of inclement (wet) weather, players are to contact their Member Club to determine if play in their game will proceed or be postponed. DO NOT contact the LSEBA or Match & Program Committee.

### 6.4 Greens Unavailability

**At each Member Club, the Greens Manager or their proxy shall decide whether the greens are unsuitable for play for the whole day, refer rule 3.8.**

### 6.5 Cancellation at Venue Prior to Commencement of Play

If weather conditions deteriorate at a Member Club which has not declared its greens unsuitable for play for the whole day, the decision whether or not play shall start due to the condition of the greens, shall be the sole responsibility of the Member Club's Greens Manager or their proxy.

### 6.6 Suspension of Games during Play

**6.6.1** When play has commenced and weather conditions deteriorate, the Umpire of the Day will suspend play on affected greens if the Home Club's Greens Manager or their proxy closes the green. This may be regarding the condition of one or all greens at the venue. Play shall not be resumed without the permission of the Greens Manager or their proxy.

**6.6.2** The Umpire of the Day may also suspend play if a side Manager appeals on the grounds that the weather conditions are such that continuing to play would constitute a breach of duty of care. A side Manager's appeal shall only affect the game in which their side is engaged and shall not affect any other games at the same venue.

**6.6.3** The Umpire of the Day may also suspend play on his/her own discretion without appeal from either side Manager if it is felt that the conditions warrant it. If play has been suspended it shall not be resumed without permission of the Umpire of the Day.

**6.6.4** Play will be abandoned for the day if it is not possible to resume after one hour from the time of the last stoppage. Play may not be abandoned for the day until the expiry of the hour from the last stoppage. Refer Rule 6.1.4.

**6.6.5** For scoring of incomplete games refer to Rule 5.7.

### 6.7 Lightning

Lightning can occur without other typical storm characteristics (i.e. thunder, rain and wind) being present.

Bowls SA & the LSEBA are committed to ensuring that all players, officials, administrators and spectators are safe during lightning activity

**6.7.1** When lightning is sighted by the Umpire of the Day, play will be suspended, and all players will be required to leave the green IMMEDIATELY and move to a safe structure.

No place is absolutely safe from lightning strikes, but the Umpire of the Day is to ensure that all parties are made aware of the location's safe areas.

**6.7.2** When the Umpire of the Day deems it safe to return to the green (at least 15 minutes after the last evidence that nearby lightning has occurred), play should resume as per the Law 32.

## 7 DISRUPTION TO PLAY – EXTREME WEATHER (HEAT)

**Refer to Annexure A – EXTREME WEATHER (HEAT) POLICY**

- 7.1 SATURDAY OPEN PENNANT MINOR ROUNDS:**  
**IF THE FORECAST TEMPERATURE FOR NARACOORTE OR MOUNT GAMBIER FOR SATURDAY ON THE BUREAU OF METEOROLOGY WEBSITE AT 4.30PM ON FRIDAY IS 38 DEGREES CELSIUS OR ABOVE, THEN ALL PENNANT GAMES WILL BE ABANDONED FOR THAT DAY and will not be rescheduled. Refer to Flow Chart.**  
**The Chairperson of the LSEBA Match and Program committee to advise clubs if played is called off.**  
**If the forecast temperature is 37 degrees or below all Pennant Games will proceed as scheduled, with monitoring as per rule 7.7.**
- 7.2 EVENING MINOR ROUNDS: (Privately arranged by clubs on Friday night)**  
**NIGHT MARQUEE/SUPER LEAGUE GAMES**  
 Please refer to the LSEBA Heat and Inclement Weather Policy  
 Because we are scheduling commencement of play at 6 pm we are expecting the temperature to be declining, so the Rule to cancel play if the predicated temperature on the day of play as per BOM website at 4.30pm the previous night is 38 degrees or above **WILL NOT APPLY**  
 If the temperature is 38 degrees or above at the scheduled practice time, then no practice ends will be allowed, and if still above 38 degrees at 6pm the start will be delayed until the temperature is below 38 degrees, as per LSEBA rules.  
 Starting time is by mutual agreement (recommended time is 6 pm)  
 A duty of care break shall be taken and all games must finish by 11pm.
- 7.3 FINALS: IF THE TEMPERATURE PREDICTED ON BOM WEBSITE AT 4.30PM THE NIGHT BEFORE IS 38 DEGREES OR ABOVE AT THE SCHEDULED VENUE THEN THAT FINAL IS ABANDONED FOR THAT DAY AND WILL BE RESCHEDULED. MATCH and PROGRAMME MAY MOVE FINAL TO ANOTHER VENUE IF THAT VENUE'S PREDICTED TEMPERATURE IS BELOW 38 DEGREES.**
- 7.4 MIDWEEK OPEN PENNANT & LADIES PENNANT:**  
 If the forecast temperature on the BOM website at 4.30pm on the day prior to the game day is predicted to be 36 degrees or 37 degrees at Naracoorte or Mount Gambier then play shall commence at 9am and proceed until 36 degrees is reached, with monitoring as per rule 7.7. If the temperature is forecast to be 38 degrees or higher the round will be abandoned.
- 7.5 In the event of day of Catastrophic Fire Danger (100+ reading) all LSEBA Pennants and Events will be cancelled in the area affected. This clause overrides any other direction in this Policy.**
- 7.6 OTHER EVENTS:**  
 Events like Champion of Champions, Opening Day, Pennant Finals, playing other Associations etc will have the same inclement weather rules using the conditions at the VENUE of the EVENT and using 38 degrees for male and open events, and 36 degrees for female events.
- 7.7 MONITORING THE HEAT:**  
 If the temperature is predicted to be 35 degrees or higher, the umpire (or an appointed assistant) must check the temperature at the designated Bureau of Meteorology site for that club (refer Annexure B) at least once every 30 minutes. This temperature reading at the BOM is only updated on the hour and half hour, so we recommend the umpire sets an alarm (e.g. on mobile phone) at 2 minutes past the hour and half hour so the reading obtained is the most recent.  
 If the BOM temperature exceeds the cut-off limit for that event then the umpire **MUST** tell all teams to cease play when the end in progress has been completed. If that end becomes dead then it is not replayed until the temperature has dropped and play has recommenced.  
 No players can ignore the umpire and continue play, and if they do the scores will not be allowed.  
 The umpire will continue to monitor the BOM site every ½ hour and will only allow play to restart when the temperature has fallen below the designated cut-off level.  
 If play is delayed for more than 1 hour from the last stoppage (when the last rink finished the end in progress) and there is no possibility of resuming, then play will be abandoned for the day, and the rules for incomplete rounds will apply. The umpire cannot stop play until this hour has past unless there is insufficient time available to complete the game, using an allowance of 10 minutes per end and an average of 15 ends per team. The umpire should calculate how much time is required to play enough ends at 10 minutes per end to reach 15 ends, and deduct this from the scheduled end of play time limit. (6 00pm for Saturday, 3 00pm Weekdays or (2 00pm if started early, 11pm for night pennant games). This calculation will set a time by when play must have resumed to be able to get a result. **If the umpire considers there is a good chance of resuming due to the temperature declining enough before this calculated time, then he/she waits longer than one hour before calling the game off.**  
 When play resumes the game continues until the earlier of either 25 ends or the time limit is reached.  
 Please note that the umpire also has a DUTY OF CARE to all players and can call for extra drinks breaks

(eg on humid days) and can stop play if he/she considers conditions warrant stopping even if the BOM temperature has not exceeded the allowable limit. The umpire must consider this option if the opposition manager appeals regarding the playing conditions. To assist the umpire with such decisions, we recommend that the clubs continue to have a thermometer which the umpire can refer to during the 30 minute interval between BOM readings.

**This is a summary of the BSA rules including our additions.**

**Please read the full BSA INCLEMENT WEATHER POLICY for a complete understanding**

#### **7.8 Stoppages of Play**

When play has commenced and the weather conditions deteriorate, play may be suspended by appeal of a side Manager to the Umpire of the Day. The Umpire of the Day may also act on his/her own discretion without appeal from either side Manager if it is felt the conditions warrant cessation of play. In such cases, the relevant sections of Rules 7.1 to 7.4 will apply. In all cases, the Umpire of the Day should ensure that all available strategies to enable the game to continue (including "retiring" individual players) have been used before suspending play.

#### **7.9 Player Withdrawal**

Any player who considers that the effects of prolonged heat or the forecast temperature for the day of play will have an adverse effect on their health, safety and well-being can withdraw from the game without penalty to the player. Such withdrawal may also occur during play where the temperature on the green is at a level that the player considers that it places them at risk.

The withdrawal of any player from a side due to extreme weather during the game can be dealt with by the affected side Manager in any of the following ways:

- 7.9.1** A substitute, if available may be used by agreement.
- 7.9.2** The remaining players in the team may be able to continue to play. (DR. 2.6)
- 7.9.3** The side may forfeit the game.

#### **8 Replays – Finals**

- 8.1** In the event of final games being suspended due to extreme weather conditions, before 45 ends (12 player sides) or 30 ends (8 player sides) games will be programmed for alternative days at the discretion of Match & Program Committee.
- 8.2** Suspended games will resume from the point at which the game was suspended with the **same players in the same teams in the same positions within the sides**. Substitutes – refer DR 2.3.3 & 2.4 & 2.5.3. The number of ends to be played will be the number as set at the start of the original game – refer Rules 3.2 & 5.7.1.

#### **9. FINALS**

##### **9.1 Finals Series**

- 9.1.1** A finals series will be held for the following Divisions:

Saturday Open Pennants: All Divisions

Wednesday Mid-Week Pennants: All Divisions

Friday Ladies Pennants: All Divisions

##### **9.1.2 Wednesday, Friday and Saturday – all Divisions**

The sides finishing 1<sup>st</sup>, 2<sup>nd</sup>, 3<sup>rd</sup> and 4<sup>th</sup> at the end of the minor rounds, will contest the Finals. The Second (elimination) Semi Final will be between the sides finishing 3<sup>rd</sup> & 4<sup>th</sup>. First Semi-final will be between the sides finishing 1<sup>st</sup> & 2<sup>nd</sup>, with winner into Grand Final.

The loser of the Second (elimination) Semi Final is placed fourth.

The winner of the Second (elimination) Semi Final will play the loser of the First Semi Final in the Preliminary Final. The loser of the Preliminary Final is placed third.

The winner of the Preliminary Final will be the second Grand Finalist.

- 9.1.3** Finals dates and venues will be set by the LSEBA Match and Program Committee each year.

##### **9.2 Arrangements of Play**

- 9.2.1** Finals games will be played without time limits.

- 9.2.2** In the event of a draw after the full allotment of ends, side Managers will toss for the mat and all teams shall complete one end from the end of the rink at which that game was finalized (refer to Law 28). In the event of there still being a draw, the procedure will be repeated until a winner is obtained.

- 9.2.3** If play cannot be completed due to extreme weather conditions, Rule 5.7 will apply. If the appropriate number of ends has not been completed, Match & Program Committee will determine when the games will be resumed as per Rule 8.2.

### **9.3 Venues– Finals**

- 9.3.1** 1<sup>st</sup> & 2<sup>nd</sup> (elimination) Semi Finals will be played at the venue of the Minor Premier.  
**9.3.2** Preliminary Finals and Grand Finals will be played at the rostered venues as determined at the AGM.  
**9.3.3** Host Club to supply umpires and measurers.  
**9.3.4** Finals green fees to be sent to LSEBA Treasurer.

### **9.4 Player Eligibility Refer to Rule 2.3.**

## **10. APPEALS AND PROTESTS**

- At all times it is expected that games be played with true sportsmanship and common sense.
- Any appeal or protest shall first be directed to the Umpire by the Manager. The game shall be continued, or a result achieved, based on the Umpires decision.
- A side wishing to lodge a protest or an appeal against an Umpires decision may do so under the following procedure.
  1. The Umpire and the opposing Manager shall be notified verbally within ten minutes of the completion of the match that an appeal or protest is contemplated.
  2. The Club Management Committee must support the grounds for such appeal or protest with a letter from the Club Secretary to the LSEBA Secretary within seven days of the alleged offence and a copy of the letter to the other club involved.
  3. The LSEBA Secretary shall immediately call a meeting (to be held not less than seven days of receipt of the letter) of the LSEBA Appeals Committee, to deal with the appeal or protest. A representative from each club involved will be requested to attend.
  4. The decision and any penalty, decided by the LSEBA Appeals Committee shall be final, subject only to an appeal by either club, in accordance with BowlsSA Member Protection policy

## **11. PROMOTIONS & RELEGATIONS**

### **11.1 Saturday Promotions & Relegations**

#### **Division 1**

9<sup>th</sup> & 10<sup>th</sup> finishing sides are relegated to Division 2

#### **Division 2**

Grand Final winner and the minor premier

**are promoted to Division 1. But if the** minor premier is also the Grand Final winner then the losing grand finalist is the other side promoted. The 9<sup>th</sup> and 10<sup>th</sup> finishing sides are relegated to Division 3.

M & P at their discretion decide which teams go into North or South

#### **Division 3 North & South**

Grand Final winners promoted to Division 2.

### **11.2 Friday Ladies Promotions & Relegations:**

#### **Division 1**

**bottom** finishing side relegated to Division 2

#### **Division 2**

Grand Final winner promoted to Division 1

### **11.3 Amalgamation**

When two or more clubs amalgamate, they may, at the commencement of the next season after amalgamation, nominate in the competition a similar number of sides, and at the same levels, as were held by each of the Member Clubs at the conclusion of the preceding season after promotions and demotions had been determined.

## **12. ATTIRE/DRESS CODE**

- 12.1** In accordance with the Bowls SA Uniform Policy, all players in a side must be dressed in a uniform manner and have Bowls Australia logo on all club attire in accordance with the Bowls Australia Logo Policy
- 12.2** Some Member Club uniforms differ between women and men and therefore uniformity in playing

apparel for the team may be difficult to achieve. It is therefore satisfactory if the uniform registered with Bowls SA for male and female club members, which carries the club name and logo and the BA logo, are worn to establish a level of uniformity.

### 13. EQUIPMENT

- 13.1 Artificial Devices for Delivering the Jack or Bowl – Wheelchairs, Walkers & Bowling Arms** Refer to [Bowls Australia Artificial Devices Policy HYPERLINK "https://www.bowls.com.au/wp-content/uploads/2019/03/Artificial-Devices-Policy\\_February-2019.pdf"](https://www.bowls.com.au/wp-content/uploads/2019/03/Artificial-Devices-Policy_February-2019.pdf)

#### 13.2 Bowls Discs

In all games where discs are being used, all players in a team or a side must use bowls with identical discs. If a replacement player is required, then he/she may use bowls with his/her own club identification discs.  
Law 52.1.8 and DR 4.7

#### 13.3 Bowls Lifters

Players are reminded that lifters are for the sole purpose of lifting a bowl or jack and must not be used for any other purpose, or left on the green when not being used, where they could cause damage, interference or injury to other players.

#### 13.4 Scoreboards, Flags, Corner Flags, Rink Numbers, Boundary Pegs

During play, all Score Boards, Flags, Corner Flags, Rink Numbers, Boundary Pegs, if in use, must be left in place on all rinks on a green until the completion of play on the last rink in use.

### 14. POLICIES

#### 14.1 Fines and Penalties

The LSEBA/Bowls SA may impose fines or penalties on any player, team, side or club for any action or behaviour in breach of the LSEBA Rules & Conditions of Play or Laws of the Sport of Bowls or where actions are considered to bring the game into disrepute.

#### 14.2 Death

In the event of the death or apparent death of a player during a game either on the green or within the club premises, all games shall be abandoned at that club (venue) and results will be treated as in Rule 5.7. If insufficient ends have been completed to obtain a result, the game shall be treated as a draw with game points shared and two shots for each team.

#### 14.3 Mobile Phones

The use of mobile phones or any similar electronic device (including radios) on the green or immediate surrounds during play is not permitted.

Should a player have a legitimate reason (personal emergency or medical/emergency services personnel) to ANSWER a mobile phone during play they must notify the Umpire of the Day prior to playing. The phone may be carried by the player but must be silent and responded to on the bank away from play.

Refer to BA Policy "The Use of Personal Electronic and Communications Devices" for details of other exemptions and penalties for inappropriate use.

#### 14.4 National Competitions

No special arrangements will be made to reschedule games to accommodate National Events.

#### 14.5 Player Code of Conduct

The Bowls SA Member Protection Policy Player Code of Conduct shall apply.

#### 14.6 Unacceptable Behaviours

Players are expected to conduct themselves in a polite and sporting like manner when participating in any Pennant bowls game.

**14.6.1** If a player behaves in an abusive, threatening, or disruptive manner to other players or spectators during the playing of a game, the Umpire of the Day may give the player an official warning. If a warning is issued, it shall be given in the presence of that player's side Manager.

**14.6.2** Refer to Bowls Australia Instantaneous Penalties Policy (Laws book page 126-127)

If the unacceptable behaviour by the player continues after a warning, the Umpire shall call the end in progress as completed and award as many shots to the opponents as there are bowls in use in that game.

**14.6.3** If the unacceptable behaviour by the player continues, the player shall be excluded from taking any further part in that game.

**No replacement or substitute player will be allowed for his/her team.** If no further play under Rules 2.5.2 or 2.5.3 is possible for that team, the side will forfeit the game, with points & shots awarded as per Rule 5.5.

**14.6.4** The Umpire of the Day must forward a detailed written report about any incident involving an instantaneous penalty to the Secretary of the LSEBA and Bowls SA within seven (7) days of the incident, for the appropriate investigation and possible disciplinary action and or police involvement.



#### **14.7 Abuse of an Umpire**

If a player abuses or threatens an umpire whilst performing their duties, the umpire shall give the player an official warning.

The warning shall be given in the presence of that player's side Manager.

If further abuse or threatening behavior continues after the warning, the umpire shall immediately apply the contents of Bowls Australia Instantaneous Penalties Policy & send the player from the green Refer to Rule 14.6.4 for further action by the Umpire of the Day.

#### **14.8 Throwing the Mat**

The Laws of the Sport of Bowls prescribe that, after the last bowl in each end has been delivered, a player should lift the mat and place it completely beyond the face of the rear bank. Forceful behavior/ throwing of the mat will not be tolerated and penalties as per Rule 14.6 shall apply.

#### **14.9 Coach**

Either the coach of a side, or in their absence, the coach's delegated deputy, can give advice to a player during the course of play as long as they abide by the sub-clauses of Law 44.

#### **14.10 Spectators**

Spectators and anyone else not directly taking part in the game are required to stay outside the boundaries of the green and clear of the players. Spectators are encouraged to applaud good play to promote the sport and healthy competition. They should not disturb or advise the players in anyway. Law 45. The Bowls SA Member Protection Policy shall apply.

#### **14.11 Pregnancy Policy**

Before making the decision whether to continue to participate in lawn bowls the pregnant competitor should obtain expert medical advice and a clear understanding of the risks related to playing sport in that condition. Member Clubs should ensure that their Public Liability Insurance and Professional Indemnity Insurance are current and do not contain exclusions for pregnant participants.

#### **14.12 Smoking**

No player shall smoke on the playing surface. The Bowls SA 'No Smoking on the Green' Policy shall apply. It is the responsibility of the Member Club Administration to ensure that this policy is complied with.

#### **14.13 Damage to Greens**

The LSEBA has adopted the Bowls SA "Damage to Greens" Policy.

#### **14.14 Bowls – Compliance**

Refer DR 4.8.1 & 4.9.2

For LSEBA Pennant competitions, the stamp of a current or future year is NOT required.

#### **14.15 Footwear**

Bowls Australia approved footwear should be worn.

### **15. ALTERATION TO RULES**

1. These rules may be altered, amended or repealed from time to time by the Board of Management of the LSEBA;
2. Or by a notice of motion or by a motion from the floor of an LSEBA General Meeting;
3. Voting shall be in accordance with the Constitution of the LSEBA

#### **Annexure A – EXTREME WEATHER (HEAT) POLICY**

The LSEBA is conscious of its responsibility to provide direction to its Member Clubs in relation to the conduct of the game of bowls under extreme weather (heat) conditions. The following statements have been developed to enable all members to participate in a safe environment

The intent of this Policy is to enable play to continue wherever possible, empowering side Managers & officials to display leadership, always consult and make decisions in the interests of good sportsmanship and preserving the safety and well-being of players.

Play must not proceed in any capacity if the temperature as measured by the procedures referred to in these Conditions of Play reaches 38 or 36 degrees Celsius or more (as appropriate) on the Bureau of Meteorology website [www.bom.gov.au](http://www.bom.gov.au) for the nominated weather station for the venue.

In all instances the Bureau of Meteorology website [www.bom.gov.au](http://www.bom.gov.au) is to be used to access the forecast temperature, current temperature, or Fire Danger rating for the local area.

When the Bureau of Meteorology or Country Fire Service declare a day of Catastrophic Fire Danger for a Fire Ban District all matches scheduled for Clubs located in the LSEBA Region will be abandoned. This includes all home and away matches for the affected clubs.

#### **Duty of Care**

In all circumstances Member Clubs are urged to ensure a duty of care of participants by exercising caution and regularly monitoring the temperature and any potential extreme weather (Heat) Policy weather conditions before commencing, continuing or terminating Pennant games. If the forecast maximum temperature is 35 degrees or more it is the responsibility of Member Clubs to monitor, at regular intervals of no longer than 30 minutes, the temperature during all practice and Pennant play and cease play when the temperature reaches 38 or 36 degrees Celsius or more (as appropriate).

### Responsibility

In addition to adopting and applying the extreme weather (Heat) Policy before commencing, continuing or terminating any Pennant games, Member Clubs have the responsibility to ensure that they exercise a duty of care to all players by providing adequate breaks, water for player hydration, and shade and sun protection products on all days of play

Players also have a personal responsibility to ensure that they apply sound self-management practices to minimise any likely effects of heat on their health and well-being.

Cancer Council Australia always recommends protecting the eyes from UV when outdoors during daylight hours by wearing closefitting wraparound sunglasses and a broad-brimmed, bucket or legionnaire style hat to protect the eyes from ultraviolet (UV) radiation.

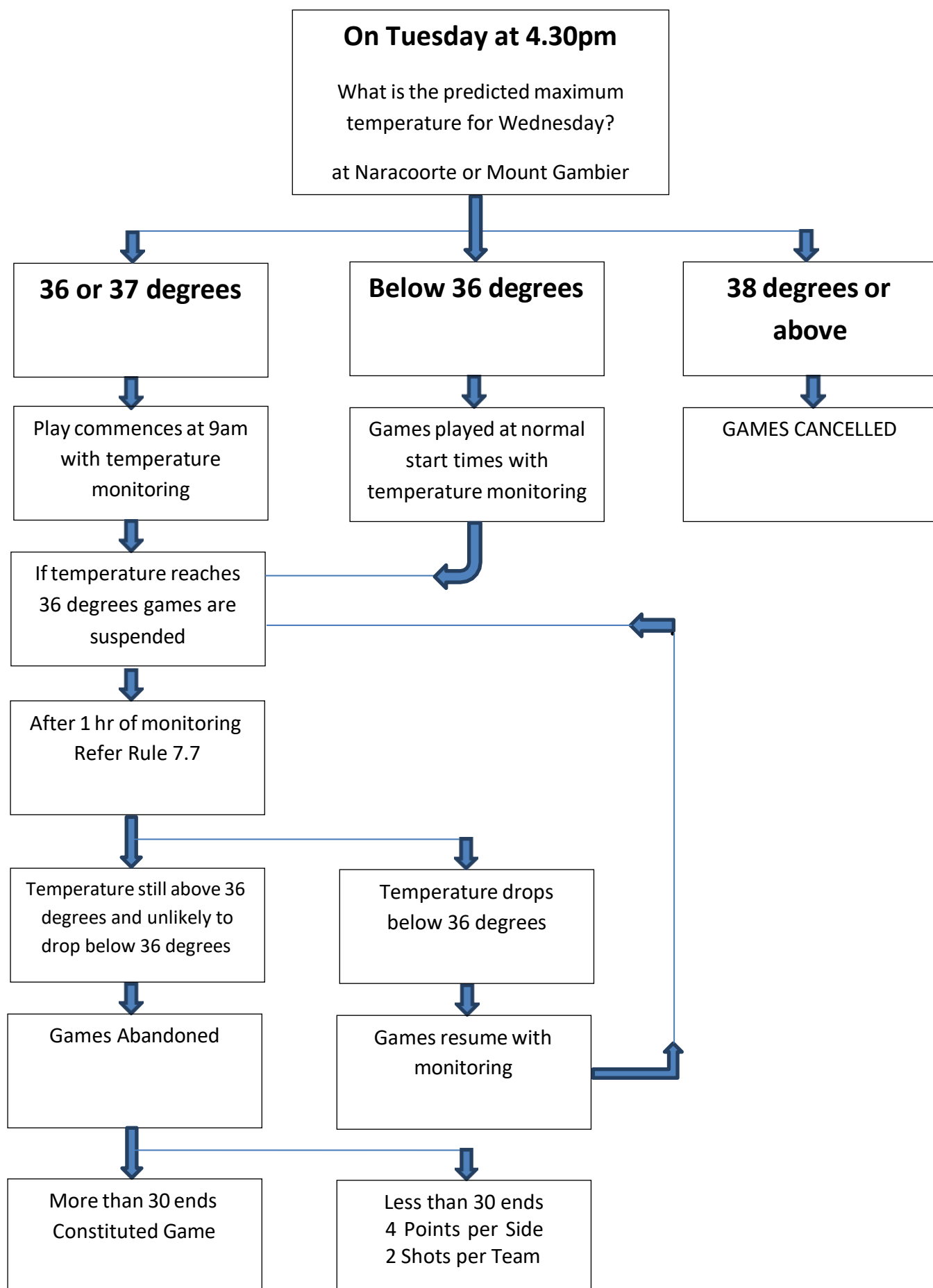
Any player who considers that the effects of prolonged heat or the forecast temperature for the day of play will have an adverse effect on their health, safety and well-being can withdraw from the game without penalty to the player. Such withdrawal may also occur during play where the temperature on the green is at a level that the player considers places them at risk. The withdrawal of a player from a team under such circumstances be dealt with according to Rule 7.7.

### Annexure B – Weather Station Allocation

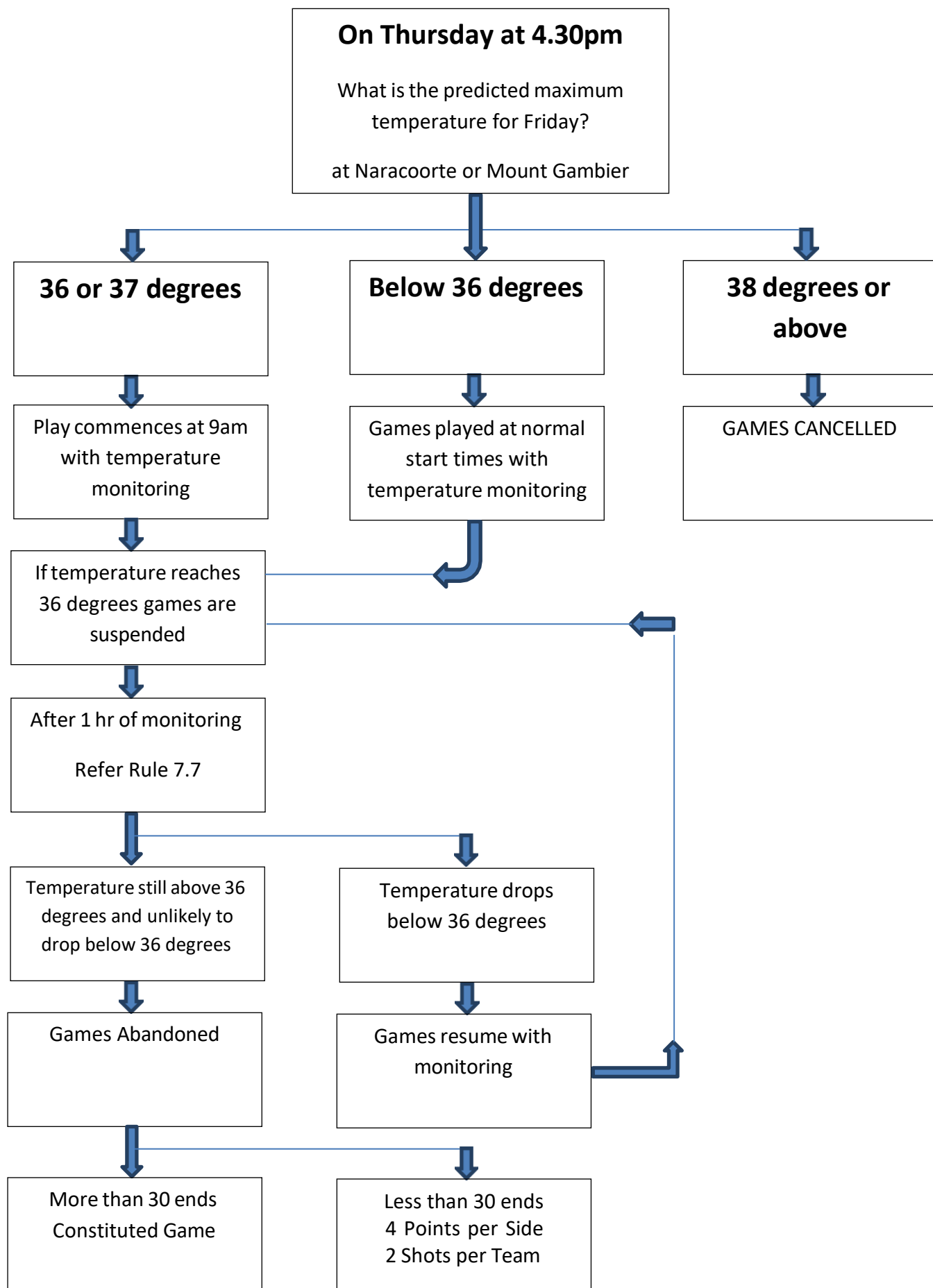
Club	Station
Beachport	Robe Airport
Bordertown Bowling Club	Keith West
Coonalpyn Bowling Club	Keith West
Frances Bowling Club	Naracoorte
Kalangadoo Bowling Club	Mount Gambier
Keith Bowling Club	Keith West
Kingston SE Bowling Club	Cape Jaffa
Lucindale War Memorial Bowling Club	Naracoorte
Millicent Bowling Club	Mount Gambier
Mount Gambier Bowls Club	Mount Gambier
Mount Gambier RSL Bowling Club	Mount Gambier
Mundulla Bowling Club	Keith West
Naracoorte Bowls Club	Naracoorte
Naracoorte RSL & District Bowling Club	Naracoorte

Padthaway Bowling Club	Padthaway
Penola Bowling Club	Coonawarra
Port MacDonnell & District Bowling Club	Mount Gambier
Robe Bowling Club	Robe Airport
Tintinara Bowling Club	Keith West

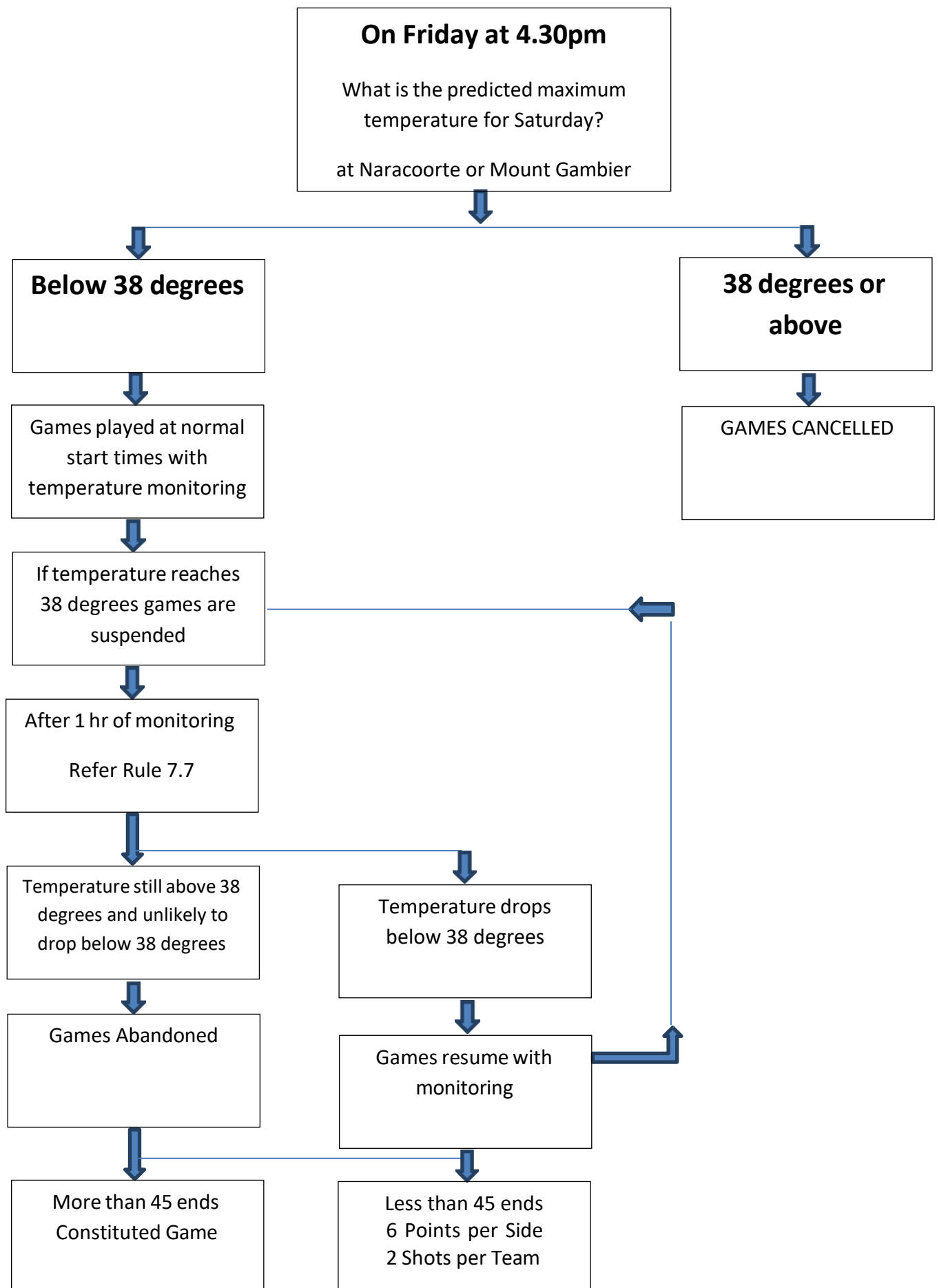
## FLOW CHART FOR DETERMINATION OF WEDNESDAY MID WEEK PENNANT



## FLOW CHART FOR DETERMINATION OF FRIDAY LADIES' PENNANT



## FLOW CHART FOR DETERMINATION OF SATURDAY OPEN PENNANT



## FINALS ROSTER OPEN SATURDAY PENNANT

At the Delegates Meeting 2022 it was decided to have 10 sides in every Division and to have Divisions 1,2, 3 North and 3 South. Each of these Divisions will have a top 4 finals series.

As there are now only 4 Divisions all clubs with 2 greens will have enough green space to host all the divisions for that final. The single green clubs have been grouped together so that as a group of 2 greens they can co-host a complete final. These groups are Beachport and Robe, Frances and Lucindale and Kalangadoo and Penola. When these clubs get their turn in the rotation the division 1 and 2 sides will be at the first named club and divisions 3 and 4 will be at the second named club in the first cycle and in the reverse order in the second cycle. The 2 or 3 green clubs will allocate divisions to their greens by their greens staff or club committee.

Each club or group will get a final every 5 years.

The first cycle of the roster is as below. Any change requested by the host club will have to be approved by the LSEBA Board.

Club or clubs.	Preliminary Final	Grand Final
Kalangadoo/Penola	2022 Div 1 & 2 at Kalangadoo Div 3 & 4 at Penola	
Kingston		2022
Millicent	2023	
Mount Gambier		2023
Mt Gambier RSL	2024	
Naracoorte		2024
Naracoorte RSL	2025	
Port MacDonnell		2025
Beachport/Robe	2026 Div 1 & 2 at Beachport Div 3 South & 3 North at Robe	
Frances/Lucindale		2026 Div 1&2 Frances. Div 3 South&3 North Lucindale

## LADIES FINALS ROSTER Starting in season 2021/22

First year was drawn at 2021 AGM on 14/5/2021

	Preliminary Final	Grand Final
Beachport	2022	
Kingston		2022
Lucindale	2023	
Millicent		2023
Mount Gambier	2024	
Mt Gambier RSL		2024
Naracoorte	2025	
Naracoorte RSL		2025
Penola	2026	
Port MacDonnell		2026
Robe	2027	
Beachport		2027
Kingston	2028	
Lucindale		2028
Millicent	2029	
Mount Gambier		2029
Mt Gambier RSL	2030	
Naracoorte		2030
Naracoorte RSL	2031	
Penola		2031
Port MacDonnell	2032	
Robe		2032

Each club will get a final every 4 and a 1/2 years

While there are an uneven number of clubs with Ladies sides then it will be a preliminary final in one cycle and a grand final in the next cycle.

If a club stops playing ladies pennant then with an even number of clubs the same clubs will always get the Grand Finals unless the roster is changed.

If a clubs green is unsuitable for some reason the roster will need to be altered that year (and the next) to re-establish the order.

If a club starts playing Ladies they will join the roster at the end of the first cycle.

---



## MIDWEEK FINALS

### ROSTER

Starting in Season 2021/22

	Preliminary Final	Grand Final
Mt Gambier RSL	2022	
Naracoorte Naracoorte RSL	2023	2022
Port MacDonnell		2023
Millicent	2024	
Mount Gambier		2024
Mt Gambier RSL		2025
Naracoorte Naracoorte RSL	2025	2026
Port MacDonnell	2026	
Millicent		2027
Mount Gambier	2027	

Each club gets a final every 3 years

If a clubs green is unsuitable for some reason the roster will need to be altered that year (and the next) to re-establish the order.

If a club starts playing Midweek they will join the roster at the end of the first cycle.

If a club gets a Preliminary Final in the first cycle they get the Grand Final in the 2nd cycle

---



## LSEBA PENNANT CONDITIONS OF PLAY 2023/24 (APPENDIX A)

### LSEBA INTERSTATE PENNANT PERMIT FORM 2023/24

A player who is affiliated with a club or association outside of South Australia wishing play for a club associated with the Lower Southeast Bowls association must complete the following form and forward to the Secretary of LSEBA @lowersoutheastbowls@gmail.com or 4 / 145 Gordon Street Naracoorte 5271. with payment of \$20.00 prior to commencing play with that club. No player may commence playing for requested club until all sections of form has been completed and accepted by LSEBA . This form is to be completed in conjunction with any other State or Pennant declaration required by associated state bodies

#### SECTION 1 PLAYER DETAILS:

National Membership No: .....

Surname..... First Name .....

Currently a FULL Member of .....Bowling Club

Address..... State.....

Currently competing in.....Competition

Request to compete in: ..... Competition

at the .....Bowling Club

The .....Bowling Club endorses this request and confirms that the player is not under an order of suspension or expulsion and has not resigned the membership because of disciplinary proceedings and is under no financial obligation with this club or associated bodies

Signed: ..... Dated: .....

Position in Club: .....

#### SECTION 2

I, ..... Administrative Secretary

of the ..... Bowling Club

Address.....State.....

accept the above Member to play for our Club in the..... Competition during Season 2023/24

Signed: ..... Dated: .....

#### ASSOCIATION USE ONLY

Date received:

Origin Association .....Approved /Declined Dated.....

Destination Association..... Approved/ Declined Dated.....

Database Updated: / / Fee Paid: / /

Notification Sent: / / Signed: LSEBA ASSOC



## LSEBA PENNANT CONDITIONS OF PLAY 2023/24 (APPENDIX B)

### LSEBA INTRASTATE PENNANT PERMIT FORM

This permit is for a player who is a full member of a club affiliated with Bowls SA who wishes to play with another club affiliated with Bowls SA due to the competition they are seeking not being available within their nominated club.

The member must complete the following form and forward to the Secretary of LSEBA @lowersoutheastbowls@gmail.com or 4 / 145 Gordon Street Naracoorte 5271. with payment of \$20.00 prior to commencing play with that club. No player may commence playing for requested club until all sections of form has been completed and accepted by LSEBA. This form is to be completed in conjunction with any other State or Pennant declaration required by associated state bodies

#### SECTION 1 PLAYER DETAILS:

National Membership No: .....

Surname..... First Name .....

Currently a FULL Member of .....Bowling Club

Address..... State.....

Currently competing in.....Competition

Request to compete in: ..... Competition

at the .....Bowling Club

The .....Bowling Club verifies that the competition the player wishes to play in is not available at this club.

Signed: ..... Dated: .....

Position in Club: .....

#### SECTION 2

I, ..... Administrative Secretary

of the ..... Bowling Club

Address..... State.....

accept the above Member to play for our Club in the..... Competition during Season 2023/24 and verify that the club they are a full member of do not have this competition available for them to compete in

Signed: ..... Dated: .....

#### ASSOCIATION USE ONLY

Date received:

Origin Association /club ..... Approved /Declined Dated.....

Destination Association/club..... Approved/ Declined Dated.....

Database Updated: / / Fee Paid: / /

Notification Sent: / / Signed: LSEBA ASSOC

## PENNANT CONDITIONS OF PLAY

	Rule 4.2 Side Managers Responsibilities	Rule 3.10 Practice	Rule 3.9 Start Times			Rule 3.14 Mid Game Break	Rule 3.2 Ends to be played	Rule 5.7 Incomplete games	Rule 3.15 Finishing time	Rule 5.9 Advice of results
	Players names entered online by:	Practice rinks available by:	Trial ends begin by:	Begin play by:	Division	Mid game break at:	Number of ends:	Minimum number of ends for a completed game:	Finished by:	Enter results online by:
<b>Saturday</b>	Friday 6.00pm	12.15pm to 12.45pm	1.00pm	1.15pm	Div 1,2,3,4	After 15 ends	25 ends	After 15 ends each rink	6.00pm	7.00pm game day
<b>Wednesday</b>	Tuesday 6.00pm	9.15am to 9.45am	10.00am	10.15am	Div 1	After 15 ends	25 ends	After 15 ends each rink	3.00pm	4.00pm game day
<b>Friday</b>	Thursday 6.00pm	9.15am to 9.45am	10.00am	10.15am	Div 1,2,3	After 15 ends	25 ends	After 15 ends each rink	3.00pm	4.00pm game day
<b>Early Start</b>	NA	8.15pm to 8.45pm	9.00am	9.15am		After 15 ends	25 ends	After 15 ends each rink	2.00pm	3.00pm game day